

# 8000 POLY-SPAN™ Lined Pipe



Performance. Period.

## The ultimate solution for corrosive water environments

**POLY-SPAN™**  
lining stands up to the  
most corrosive water  
or wastewater.



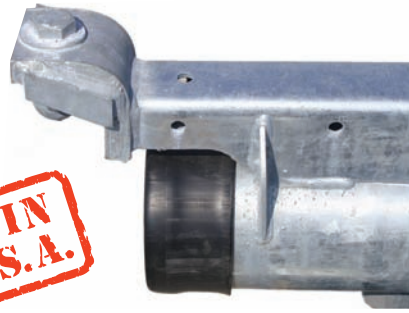
*Long-life, galvanized steel  
pipe, made by Valley.*



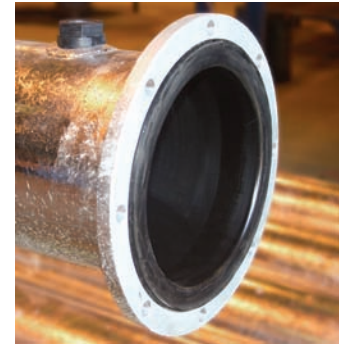
Features	Benefits
Polyethylene Liner	Withstands wear from acidic, corrosive, or saline water.
20/10 Pipeline Corrosion Warranty	20 year prorated pipeline corrosion warranty with full pipeline replacement during the first 10 years or 30,000 hours (whichever occurs first).
Robust Design	POLY-SPAN™ lined pipe is designed for agricultural, industrial, and municipal water re-use applications.
Profit and Productivity	POLY-SPAN lined pipe lets you take advantage of corrosive water and allows chemigation and fertigation with aggressive chemicals.
Sprinkler Outlets	Designed to work with different row spacings for effective crop watering.
Versatility	Works with all Valley® equipment: pivots, towables, and linears.



Special barbed clamp to support the drop hose.



Swivel pipe with liner formed over the end of the pipe.



Flange end of the pipe.

## General Information

**Sprinkler Packages** - Must use Valley® hose drops with special adapters.

**Overhangs** - 6 5/8" (168mm) pipes are lined. 4" (102mm) pipe galvanized is standard, stainless steel is available as an option. Outlet spacing: 30" (76.2cm).

**End-Gun Booster Pump** - Mounted between last pipe and first overhang pipe on a 304 stainless steel adapter.

**Pivot Options** - Corrosion-resistant stainless steel pivot riser and lower elbows available to provide more complete protection.

See your Dealer for exact dimensions and lining options

Model 8000					
Pipe Diameter		Span Lengths		Approximate Wet Weight	
Inches	mm	Feet	Meters	lbs	kg
6 5/8	168	115.1	35,06	5,000	2,275
		135.2	41,16	5,500	2,500
		140.0	42,68	5,650	2,575
		160.0	48,78	6,200	2,800
		180.0	54,88	6,800	3,100
		184.8	56,40	6,950	3,150
		186.7	56,91	7,050	3,200
		204.9	62,45	7,500	3,400
8 5/8	219	115.1	35,06	6,500	2,950
		135.2	41,16	7,300	3,325
		140.0	42,68	7,500	3,400
		160.0	48,77	8,300	3,800

POLY-SPAN™ Overhangs*	
Feet	Meters
10.1	3,08
19.2	5,85
28.5	8,69
37.6	11,46
55.9	17,0
64.7	19,72
83.3	25,4

\*Only available on 6 5/8" last span

Outlet spacings: 108" (standard) or 60" (optional)

Crop clearance: minimum of 9' 5" (2,86m)



Conserving Resources. Improving Life.

P. O. Box 358  
Valley, Nebraska 68064-0358 USA  
Phone: 402-359-2201 (Ext. 3415)  
Fax: 402-359-4429  
E-mail: irrigation@valmont.com

International Fax: 402-359-4948  
E-mail: vintl@valmont.com

www.valmont.com/irrigation/

See your local authorized Valley Dealer:

Valmont Irrigation has a policy of continuous product improvement and development. As a result, certain changes in standard equipment, options, price, etc., may have occurred after the publication of this brochure. Some photographs and specifications may not be identical to current production. Your local Valley dealer is your best source for up-to-date information. Valmont Irrigation reserves the right to change product design and specification at any time without incurring obligations.

©2005 Valmont Industries, Inc., Valley, NE 68064 USA. All rights reserved.

AD10240 RP 09/05